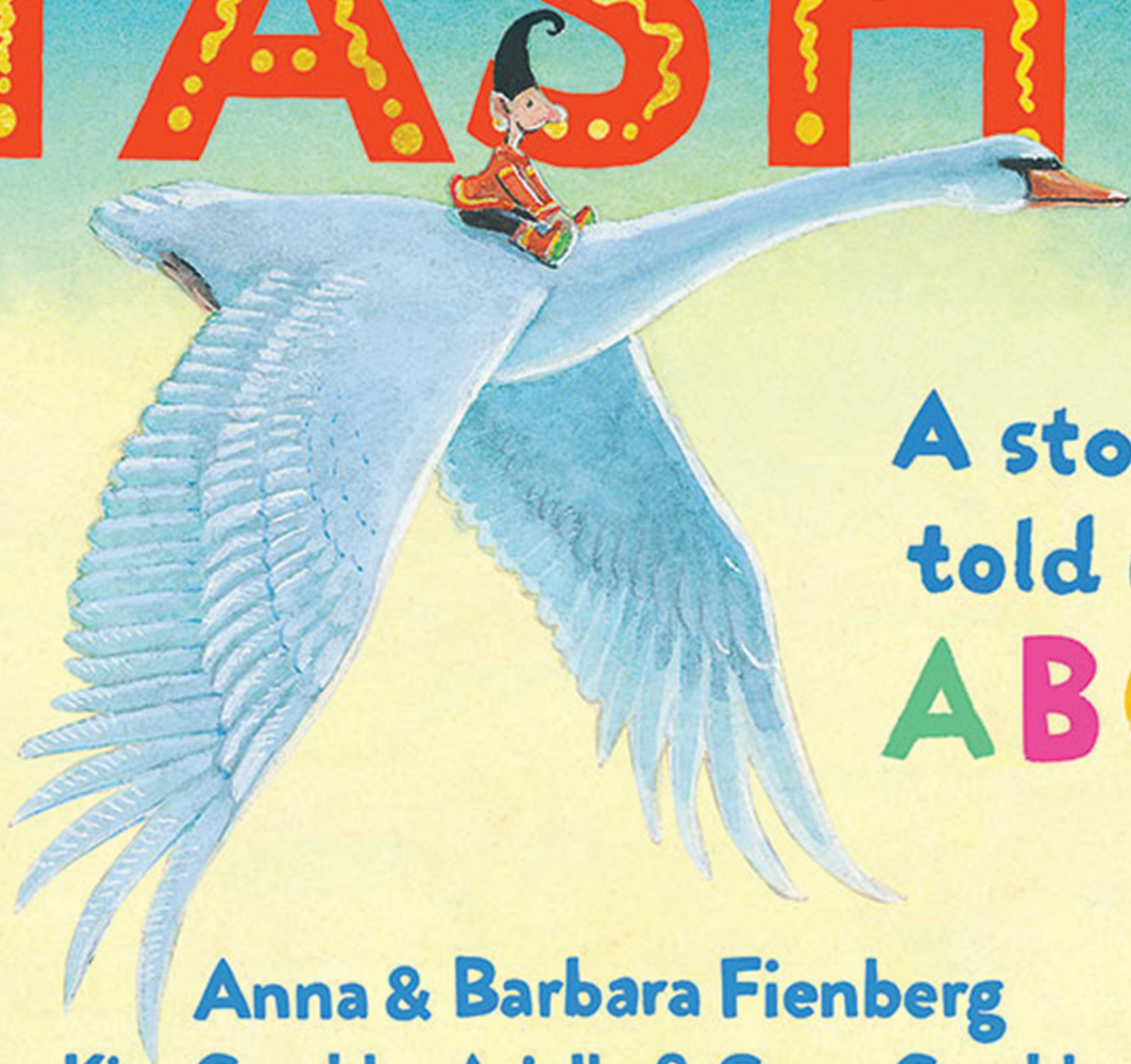


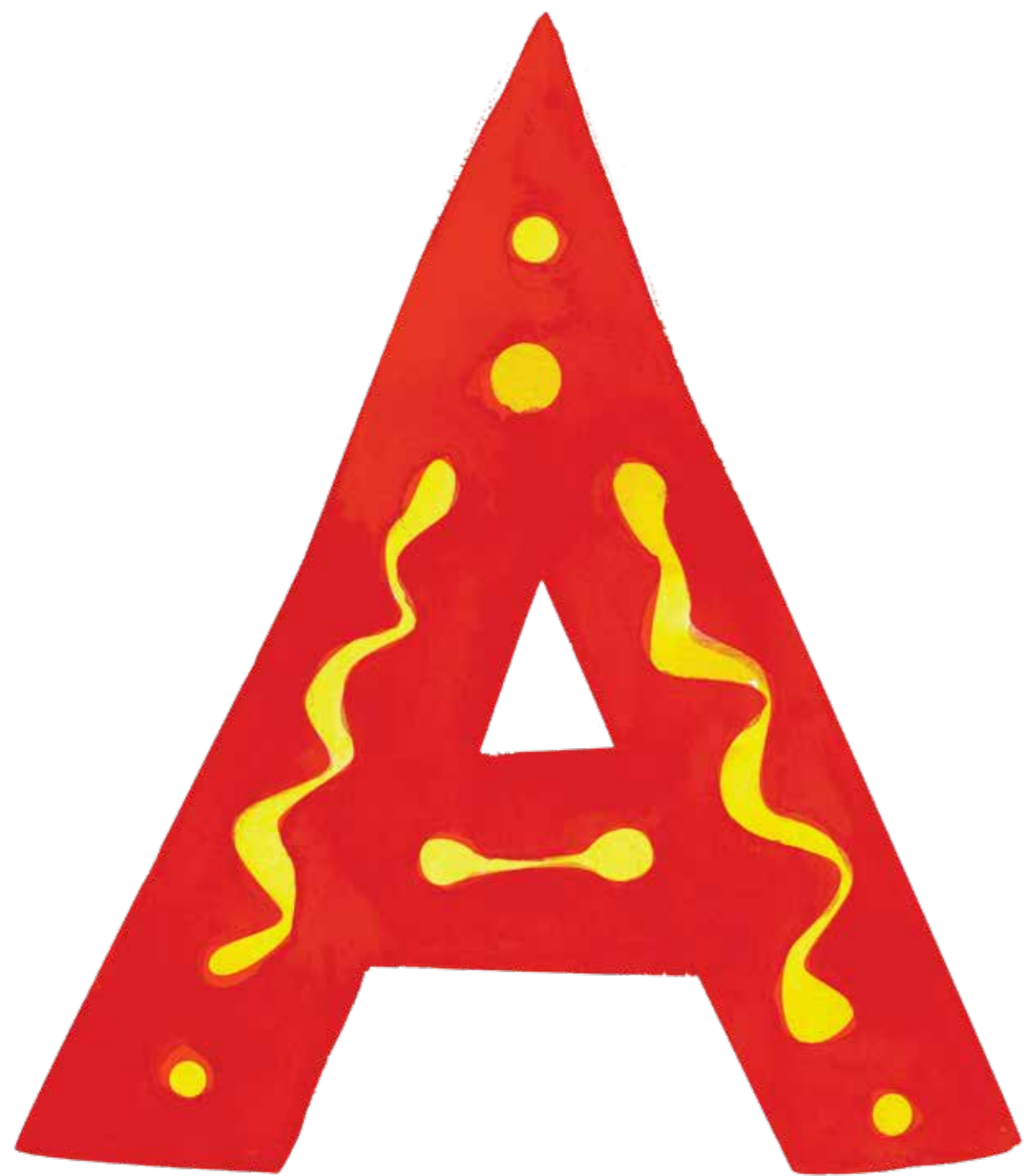
ALPHABETICAL

TASHI



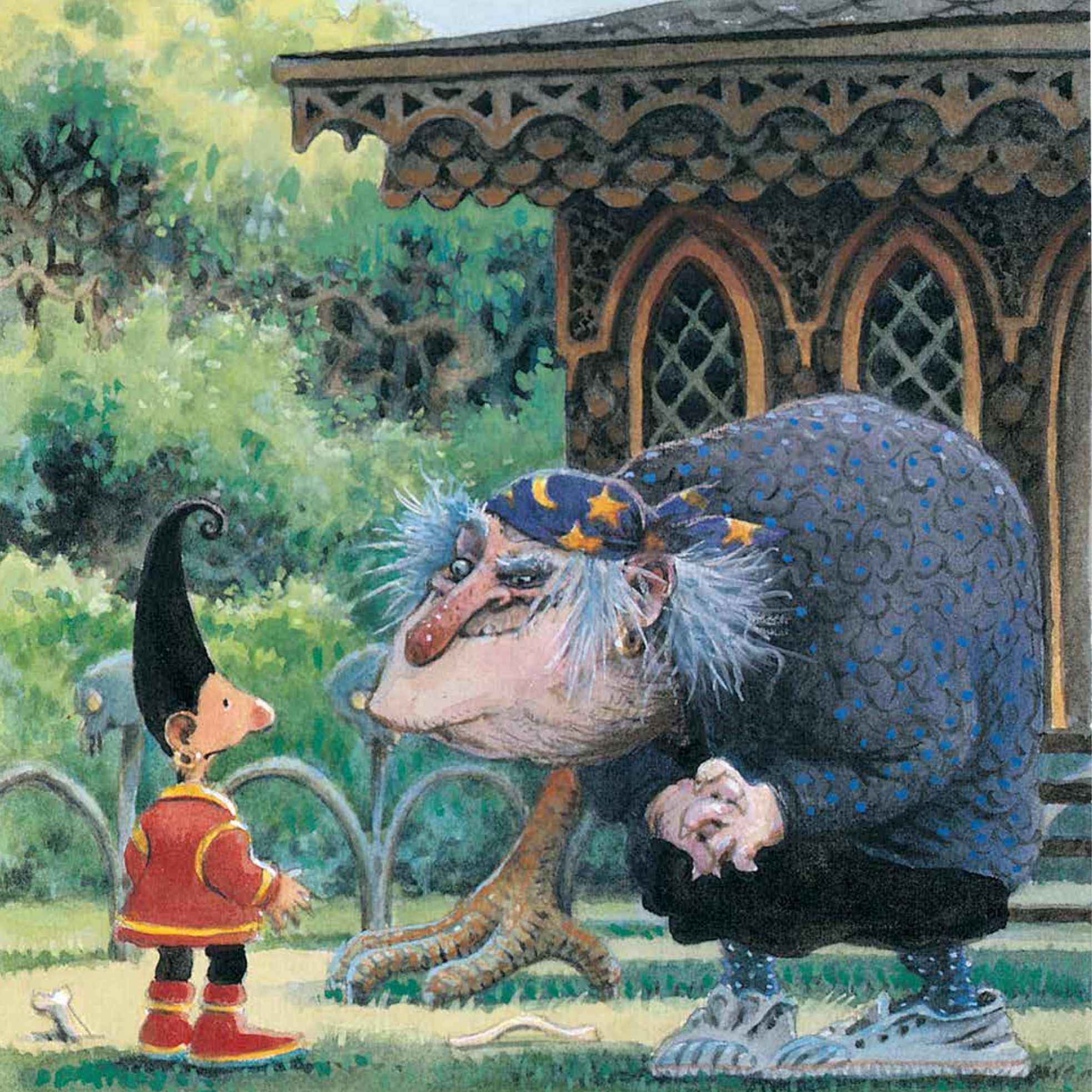
**A story
told in
ABC**

**Anna & Barbara Fienberg
Kim Gamble, Arielle & Greer Gamble**



A boy called Tashi,
brave and bold,

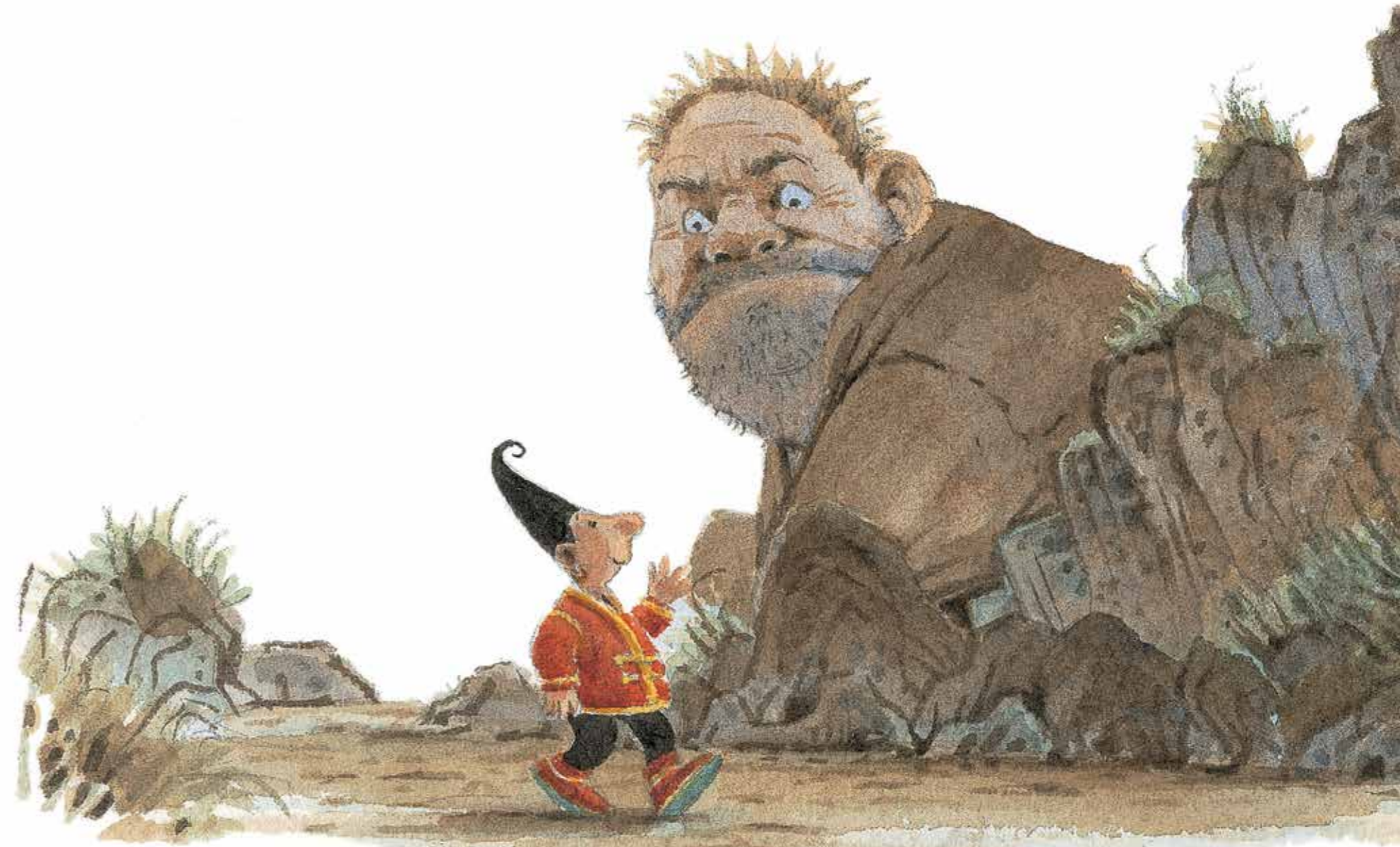




**Baba Yaga the witch,
cunning and cold,**



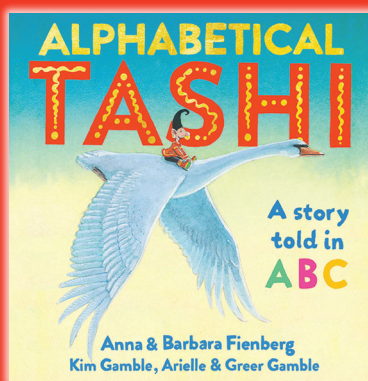
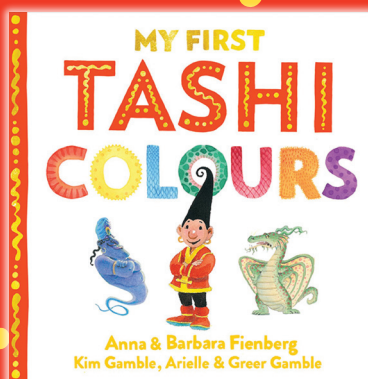
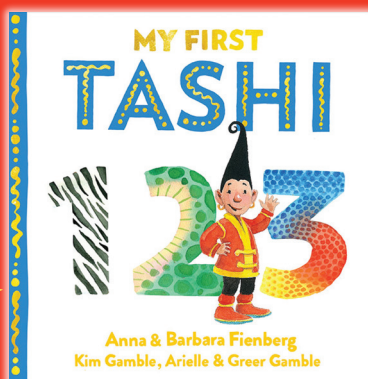
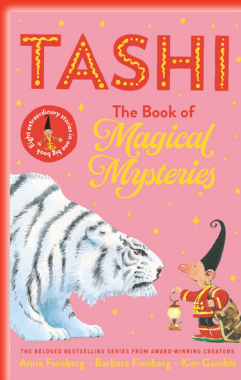
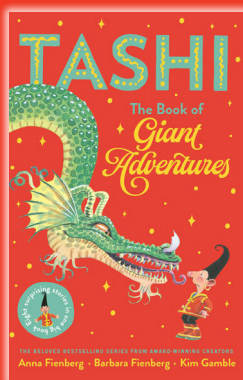
Chintu the giant,
bigger than most,



CELEBRATING 25 YEARS OF

TASHI

Anna Fienberg, Barbara Fienberg, Kim Gamble,
Arielle Gamble and Greer Gamble



'THE TASHI STORIES ARE SOME OF MY ALL-TIME FAVOURITES.'

Sally Rippin